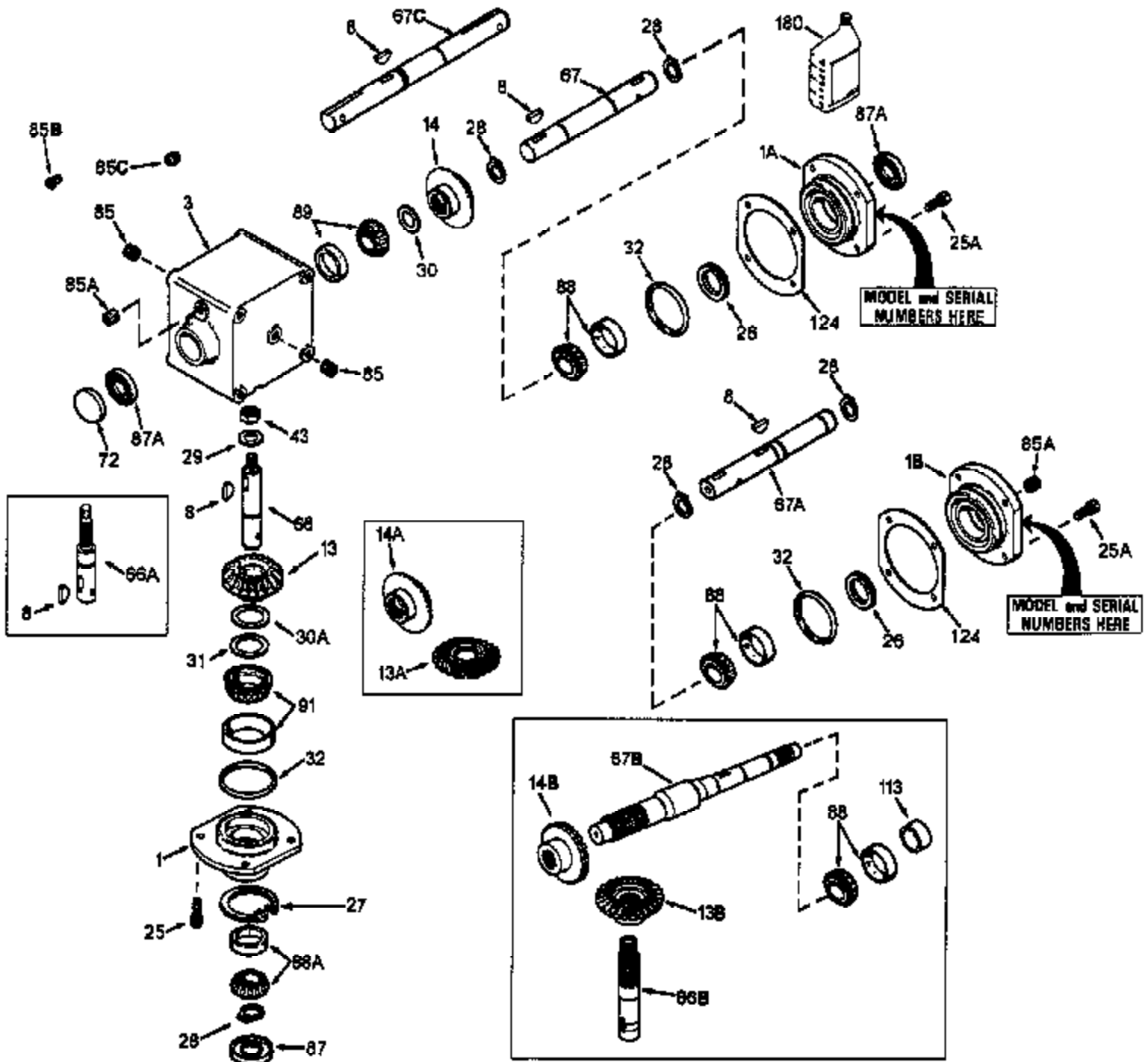
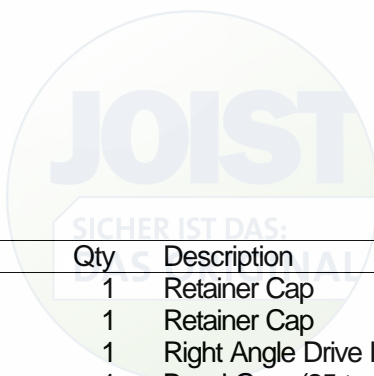


**JOIST**  
DAS ORIGINAL

ILLUSTRATION SHOWS TYPICAL PARTS ONLY. ORDER BY PART NUMBER. PARTS NOT LISTED ARE SUPPLIED BY OEM.





Ref #	Part Number	Qty	Description
1A	786105	1	Retainer Cap
1	786104A	1	Retainer Cap
3	770089	1	Right Angle Drive Housing
13	778302	1	Bevel Gear (25 teeth)
14	778303	1	Bevel Gear (26 teeth)
25	792037	8	Screw, 5/16-18 x 1"
26	780137	1	Load Ring
28	792113	1	Retaining Ring
29	792115	1	Washer
30	780131	1	Shim (1-1/2" OD x 1-1/64" ID x .002 t hick)
31	780138	1	Shim (2" OD x 1.531" ID x .002 thick)
32	788063	2	"O" Ring
43	792110A	1	Locknut, 5/4-16
66	776342	1	Input Shaft (5.38" long)
67	776343A	1	Output Shaft (Incl. 1 of No. 89 & 113 )
72	792111	1	Plug
85A	792039	1	Plug, 1/8-27
85	792116	2	Pipe Plug, 1/4-18
87	788064	1	Oil Seal, 1"
87A	788084	1	Oil Seal, 1-3/8"
89	780132	3	Bearing & Cup Assembly (SEE REPAIR MA NUAL)
91	780134	1	Bearing & Cup Assembly (SEE REPAIR MA NUAL)
113	788085A	1	Sleeve
124	780136	1	Shim
180	730229A	1	Gear Oil 80W90

1100-1100-035A Page 2 of 2

Peerless